

Wouter Witzel introduces

# RUBBERLINED BUTTERFLY VALVE EV-I SERIES

## CENTRIC RUBBERLINED BUTTERFLY VALVE RE-DESIGN EV-SERIES

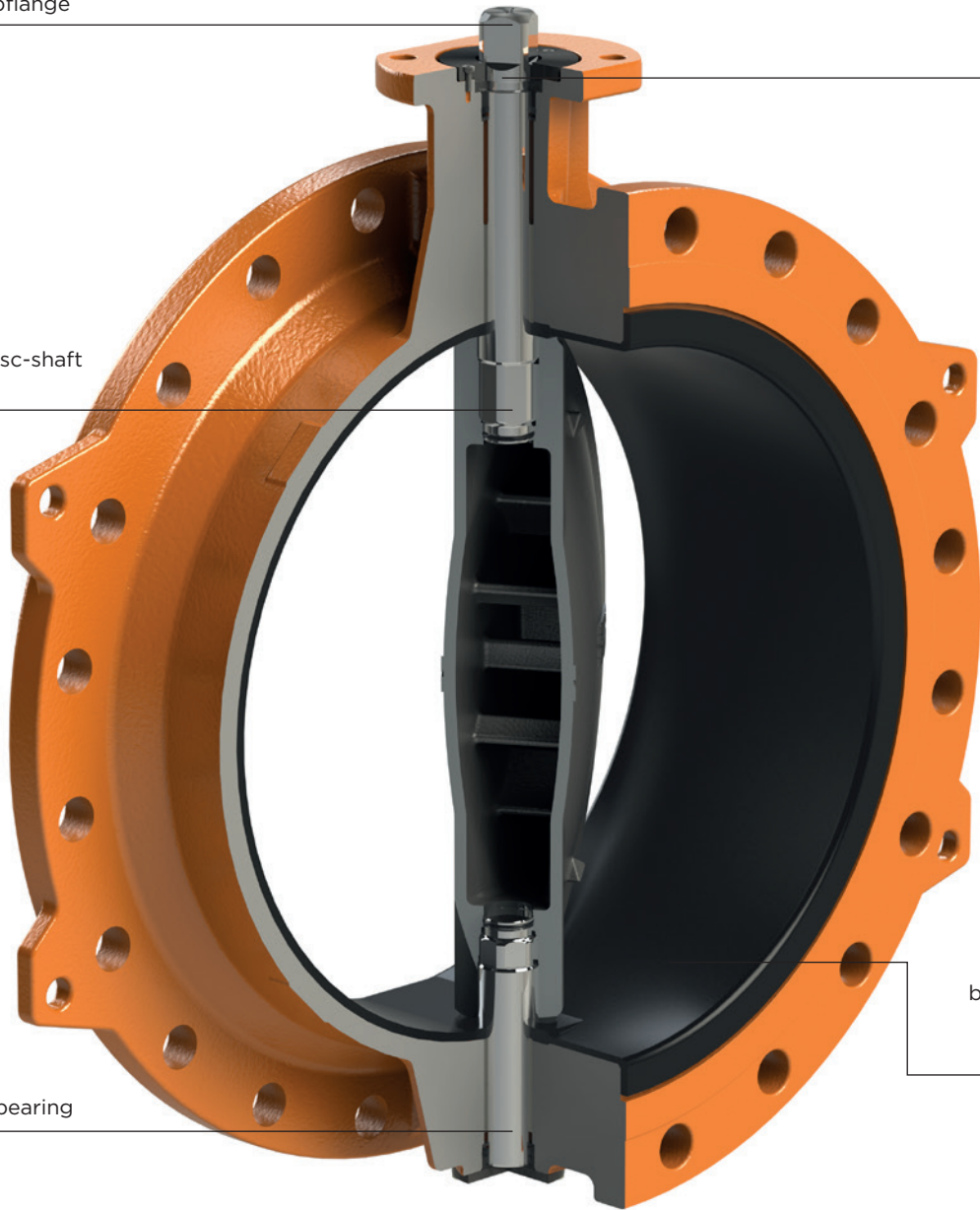
ISO 5211 topflange

Anti-blowout

Hexagon Disc-shaft connection

Integrated bearing

High duty:  
Rubberlined  
bonded to the body,  
vacuum proof and  
reliable low torque



*always there when you need us!*



## RUBBERLINED BUTTERFLY VALVE EV-I SERIES

### Other advantages

- Improved sealing, lower torque
- Easy disassembly
- Easy installation (integrated flange gasket)
- Bi-directional tight shut off (TSO)
- Many trim options, incl. Super Duplex and Hastelloy-C®
- Several actuation options
- Suitable for vacuum applications and control duty

**WOUTER WITZEL**  
VALVE TECHNOLOGY

*always there when you need us!*